

A PERFECT COMBINATION OF HIGH DESIGN AND HIGH UTILITY

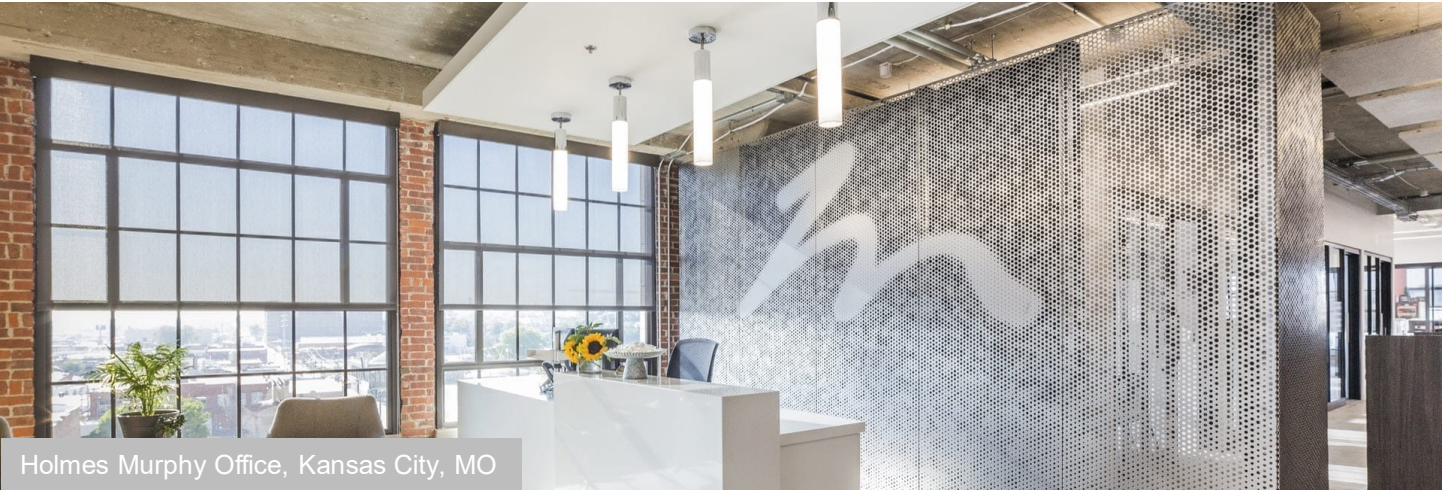
Create signature metal design elements with the flexibility and affordability of Zahner ImageWall custom-perforated metal panels. These captivating and durable metal features combine parametric designs with classic materials to translate custom images into range of holes through the patented process of Zahner ImageWall.

Zahner ImageWall metal panels can be used to enhance lobbies, decorate parking garages, refresh aging exteriors, or create partitioned outdoor spaces. Depending on your design goals, the metals and finishes you choose can be used to create warmth, contrast, color, separation and privacy.



Hayward Field Tower, University of Oregon

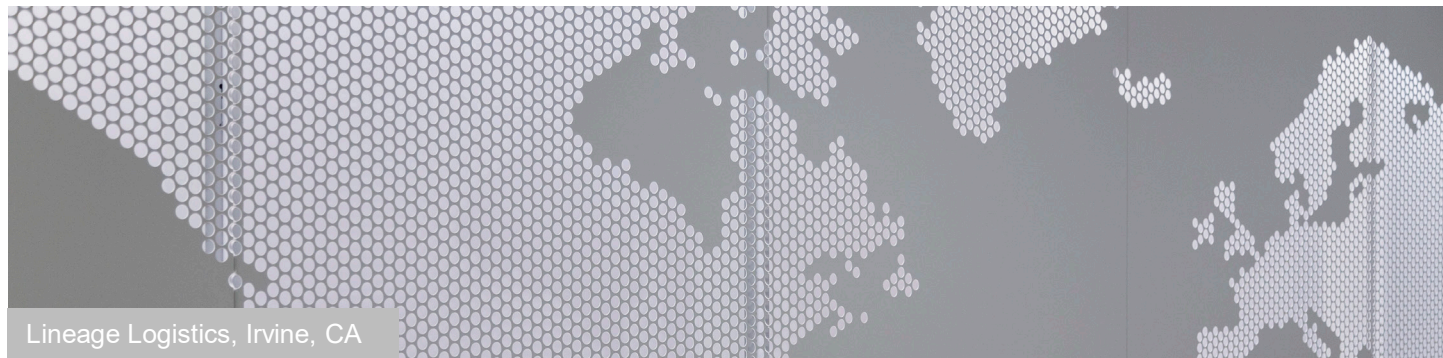




Holmes Murphy Office, Kansas City, MO

Our standard systems are a great starting point. Designed based on our experience with actual projects, they are often exactly what your projects need. However, every ImageWall is made to order and thus fully customizable. Our team of designers and engineers will work with you to design a system that is just right for your needs.

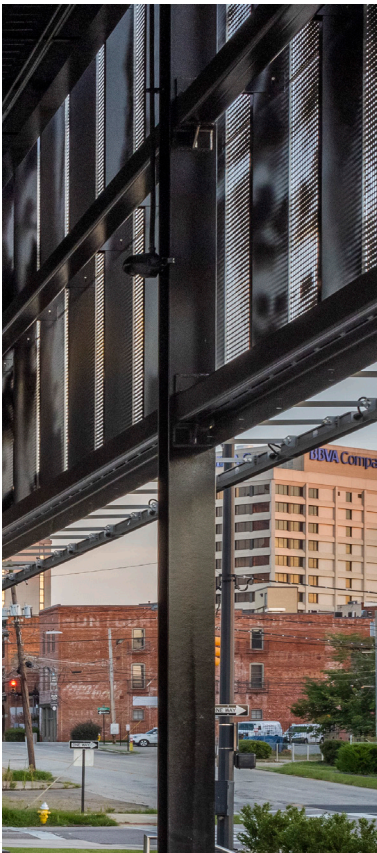
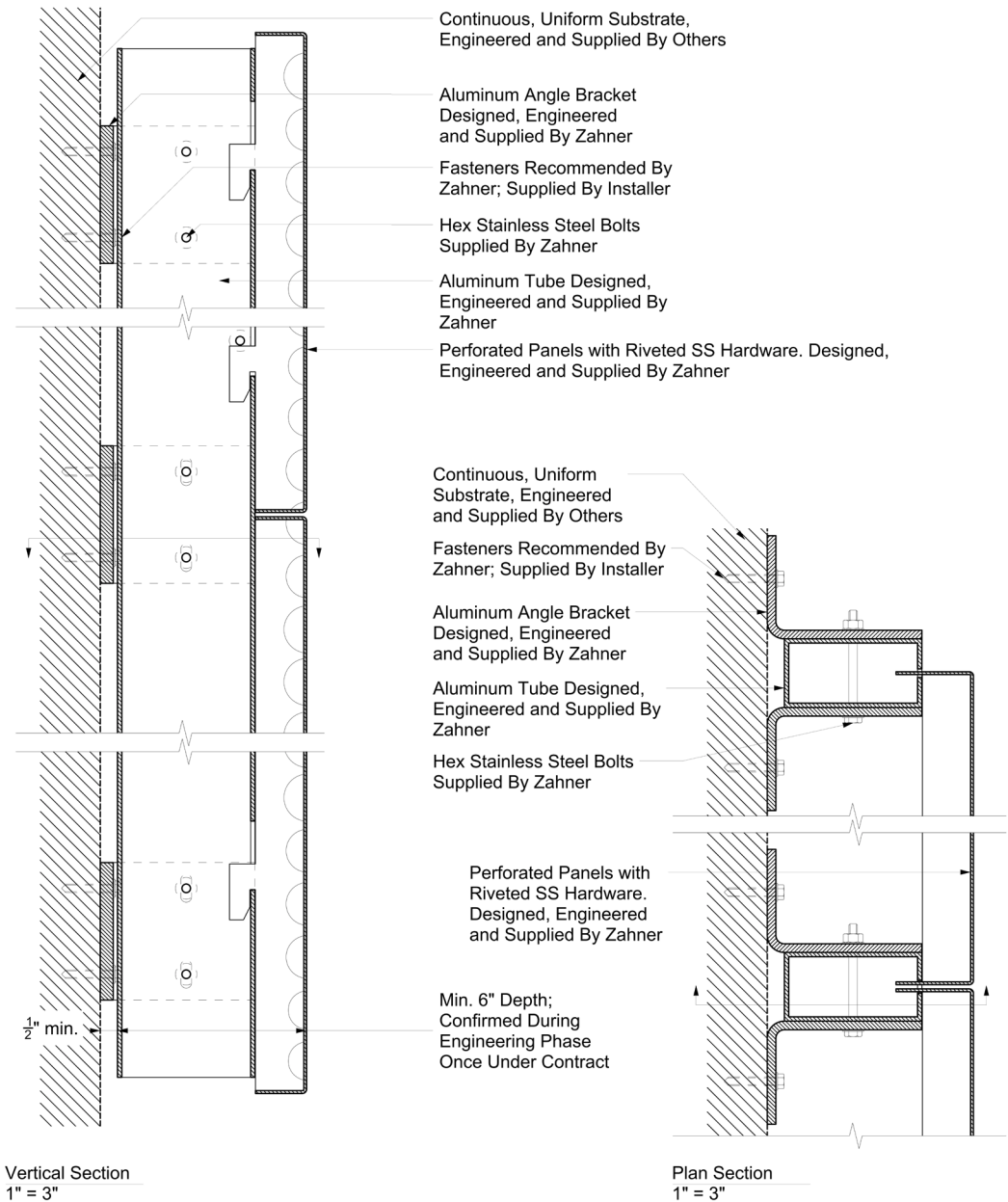
Project Context	→	Material & Finish	→	Supply Option	→	Image
<p>Zahner ImageWall Team will evaluate Architectural Drawing Set indicating the overall custom scope and substrate for the project and work with the design team to fit the needs.</p> <ul style="list-style-type: none">• Overall Size• Existing / New Substrate Information (Drawing Set)• Project Location• Project Schedule		<p>Stainless Steel: Mirror Polish Glass Bead™ Angel Hair®</p> <p>Aluminum: Powder coated (RAL Color) Anodized</p> <p>Steel: Solanium Steel™</p> <p>Copper: Dirty Penny Copper™ Star Blue Copper™</p> <p>Zinc: Hunter Zinc™ Roano Zinc™ Baroque Zinc™ Pre-Weathered</p>		<p>Standard Anchored To Substrate Behind or Top & Bottom: Custom perforated panels featuring <i>Drop & Lock</i>, milled aluminum extrusions and angle anchors</p> <p>Heavy Duty XL: (Large Vertical Spans) Custom perforated panels featuring <i>Drop & Lock</i>, milled aluminum extrusions and anchors.</p> <p>Double Return: Custom perforated metal panels only.</p> <p>Ceiling: Custom perforated panels featuring <i>slide & lock</i> and milled aluminum extrusions</p>		<p>Grid Size: 0.625"- 3" OC</p> <p>Solid Border: 0"- 0.75" W</p> <p>Custom Panel Sizes</p> <p>Custom Perforation Sizes</p>



Lineage Logistics, Irvine, CA

Standard | Anchored To Substrate Behind

ImageWall's medium-duty wall system is used in interiors and on small exterior facades. Panels **drop and lock** into mullions (extrusions), which are anchored to the wall with angle brackets. The brackets and mullions can vary in depth to allow extra space behind the panels for lighting.



IMAGEWALL: Anchored to Substrate Behind

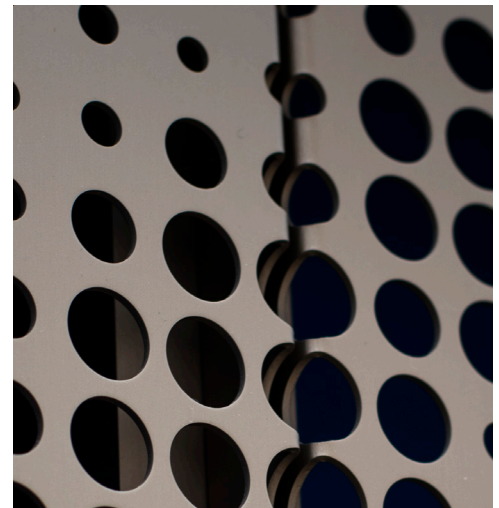
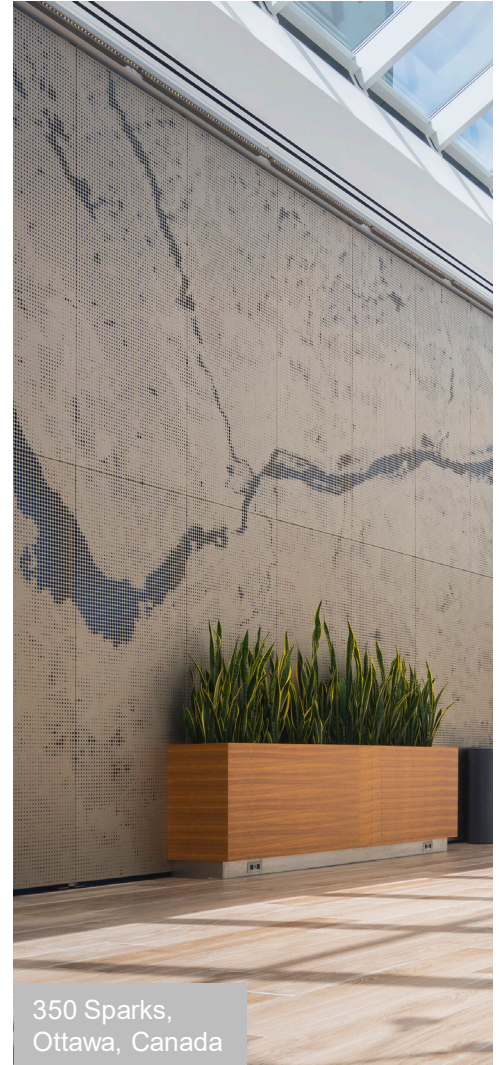
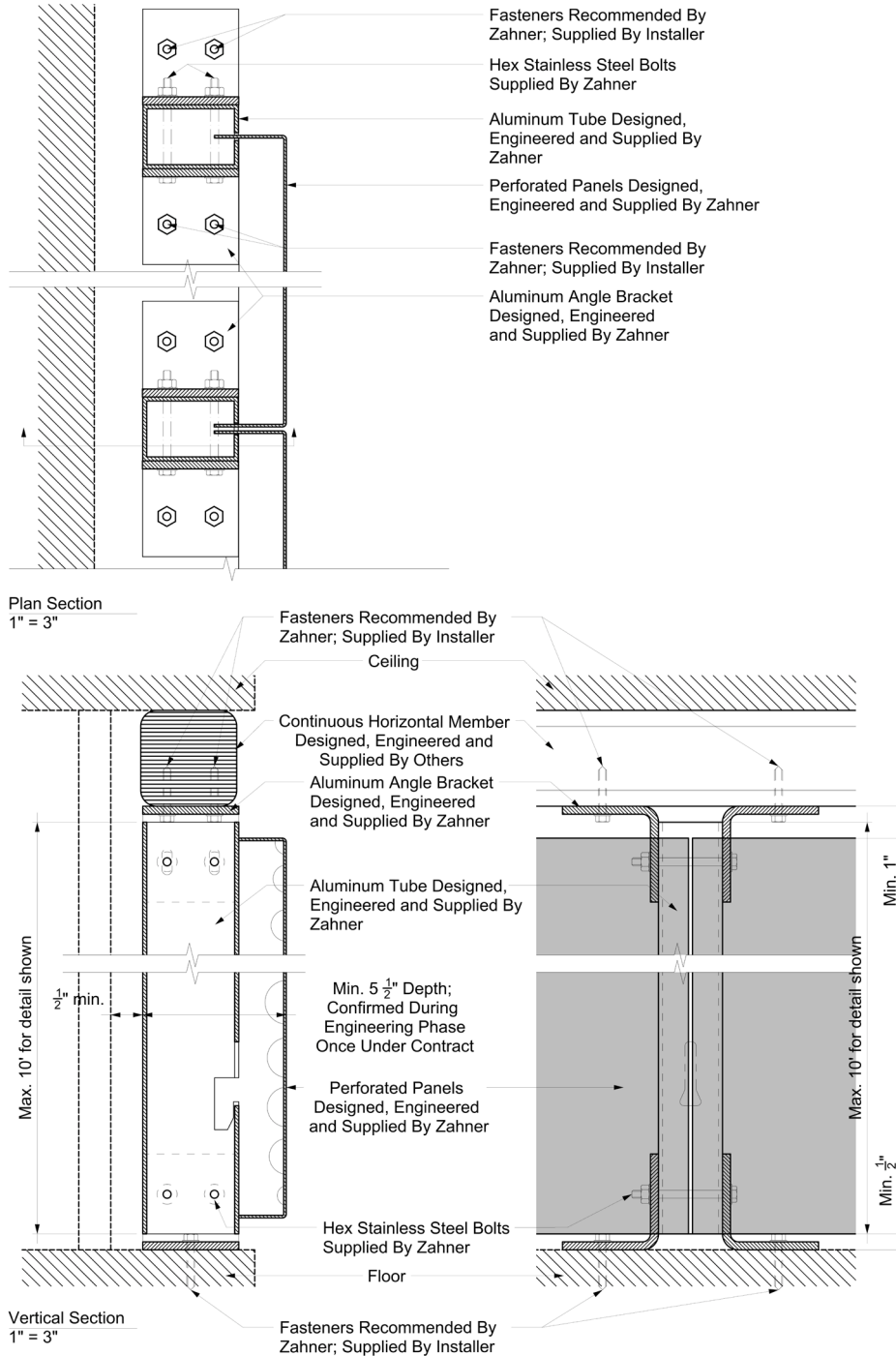
SITE	Exterior/Interior of existing or new construction
FEATURES	Drop & Lock System: Panels, Extrusions & Angle Brackets
USES	Façade

Mullion Division Condition

20' max mullion span. If mullion span exceeds 20', will be subdivided and spliced together.

Standard | Anchored To Substrate Top & Bottom

ImageWall's medium-duty wall system is used in interiors and on small exterior facades (Openings or Cutouts). Panels **drop and lock** into mullions (extrusions), which are anchored to the substrate at top & bottom with angle brackets. The brackets and mullions can vary in depth to allow extra space behind the panels for lighting.



IMAGEWALL: Anchored to Top & Bottom

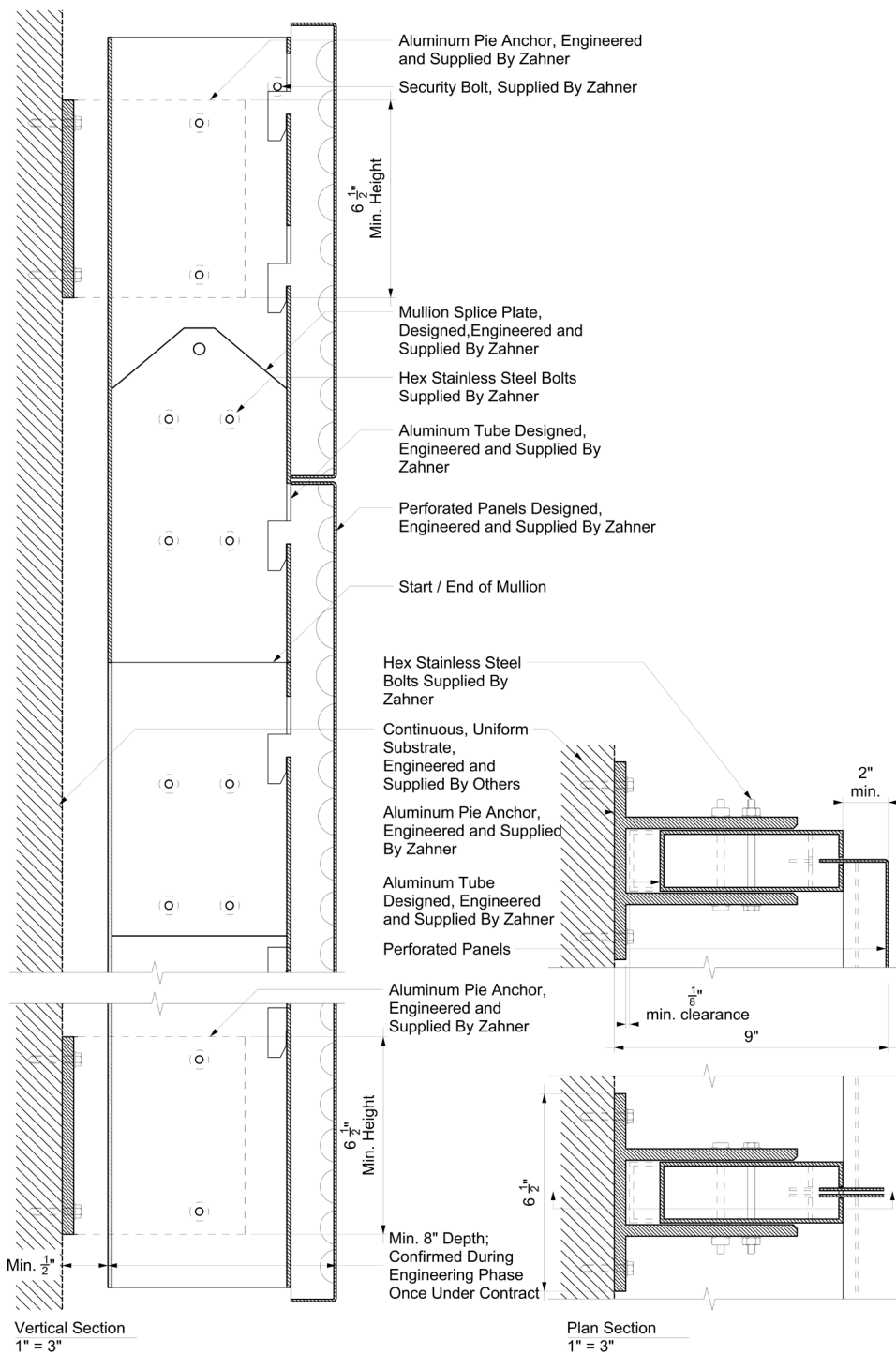
SITE Exterior/Interior of existing or new construction
FEATURES Drop & Lock System: Panels, Extrusions & Angle Brackets
USES Feature Wall

Mullion Division Condition

Max. mullion height for detail shown is 10'.
 If mullion exceeds 10', overall depth of system will increase.

Heavy Duty | XL: (Large Vertical Spans)

ImageWall's heavy-duty wall system is used on medium to large-scale exterior facades. Panels drop and lock into mullions (extrusions), which are attached to the uniform substrate with pi-anchor (extrusions). The anchors and mullions can vary in depth.



IMAGEWALL: XL

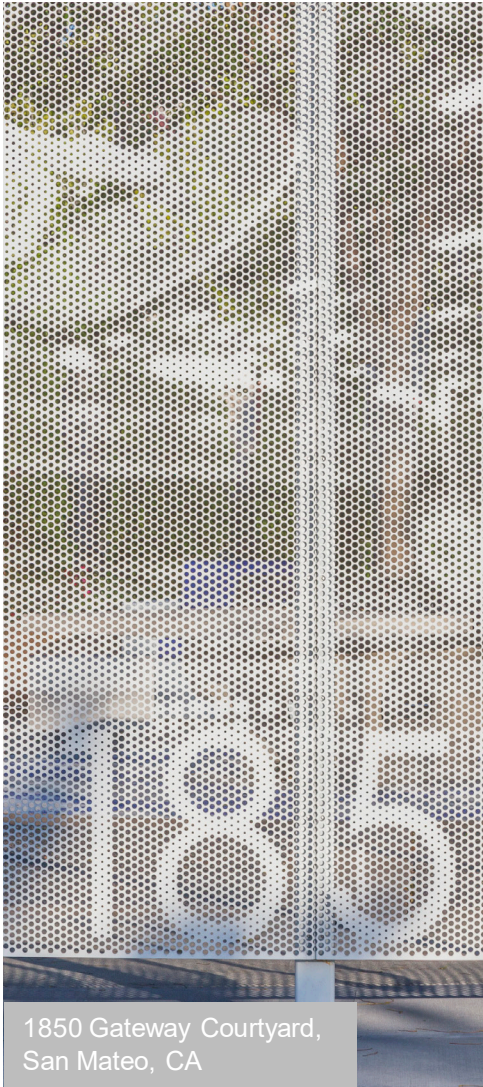
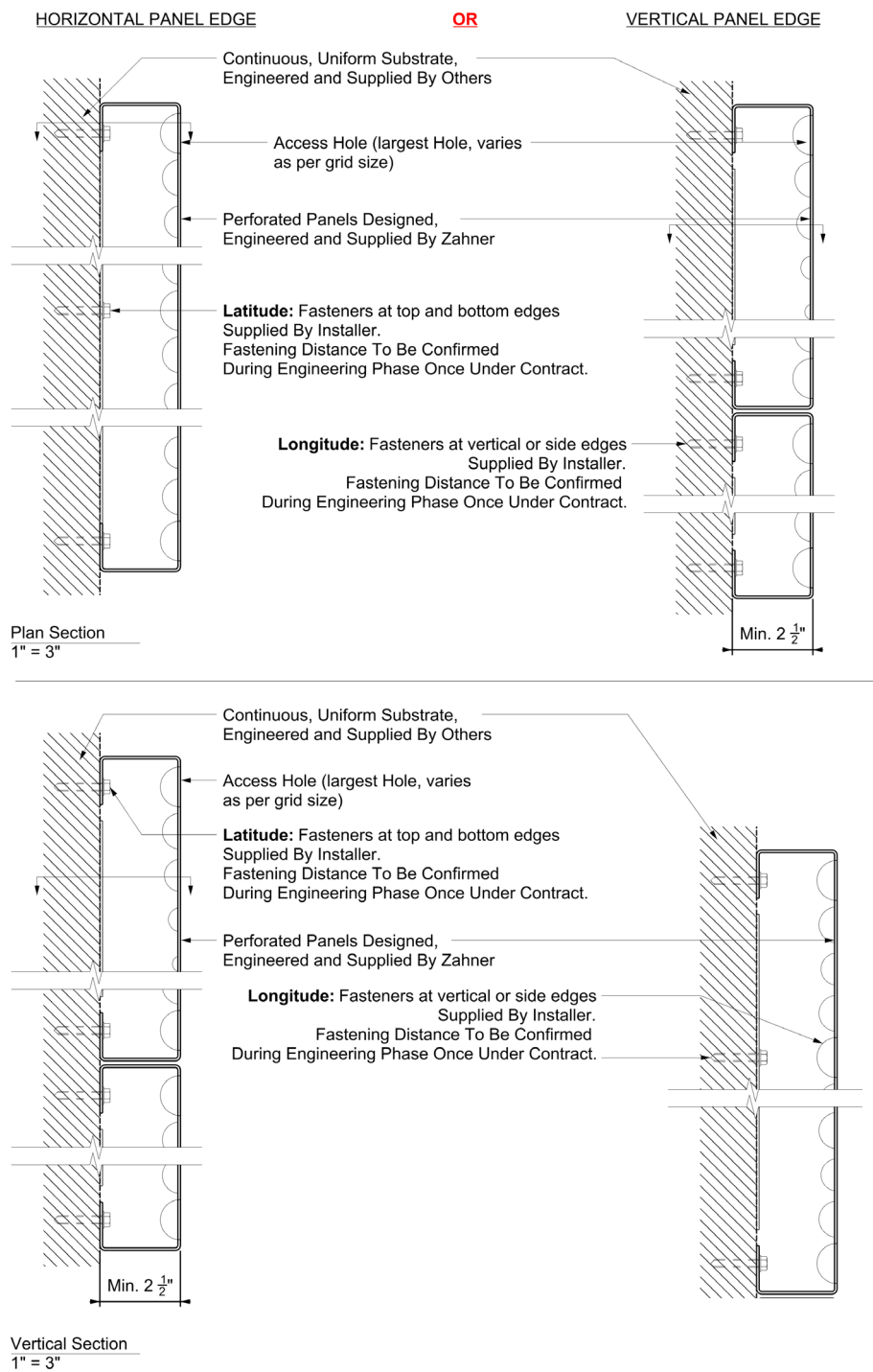
SITE Exterior of existing or new construction
FEATURES Heavy duty anchoring, large vertical spans between anchors
USES Parking garage, large façade

Mullion Division Condition

20' max mullion span. If mullion span exceeds 20', subdivide into smaller mullions. Mullions may be spliced together.

Double Return

ImageWall's Double Return system can be used in a variety of settings to provide a free-standing structural backing for the panels. Panels are attached directly to vertical steel posts or continuous substrate at top and bottom edges of panel boundaries (Posts / Substrate Provided By Installers).

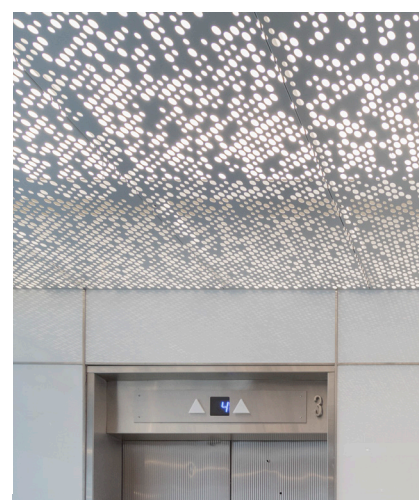
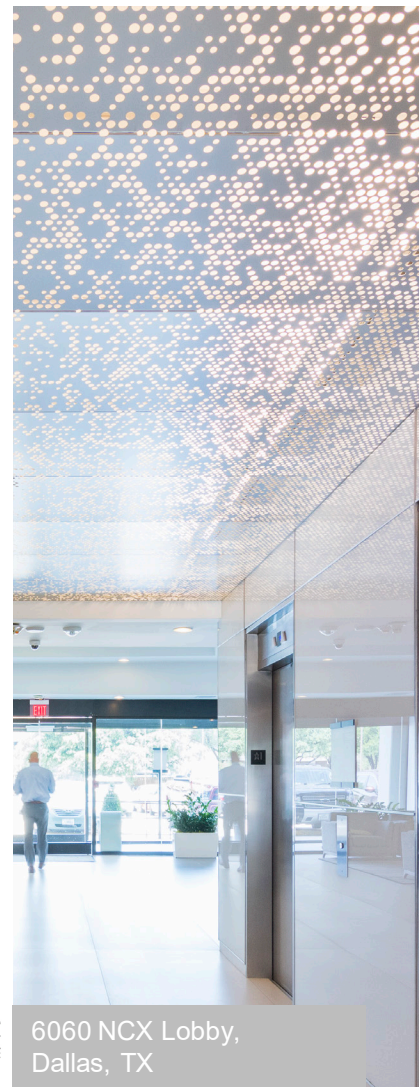
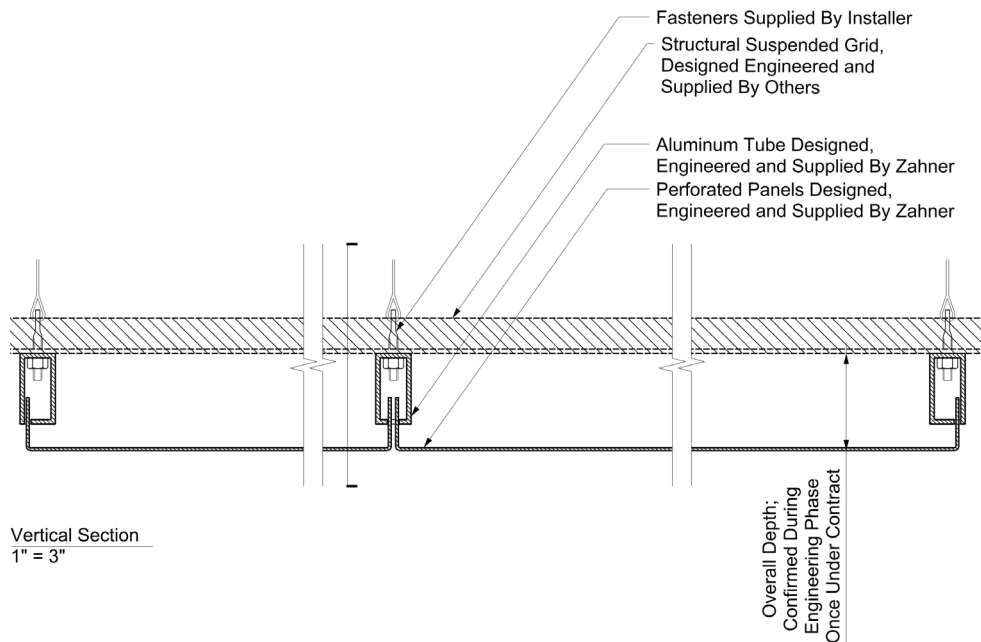
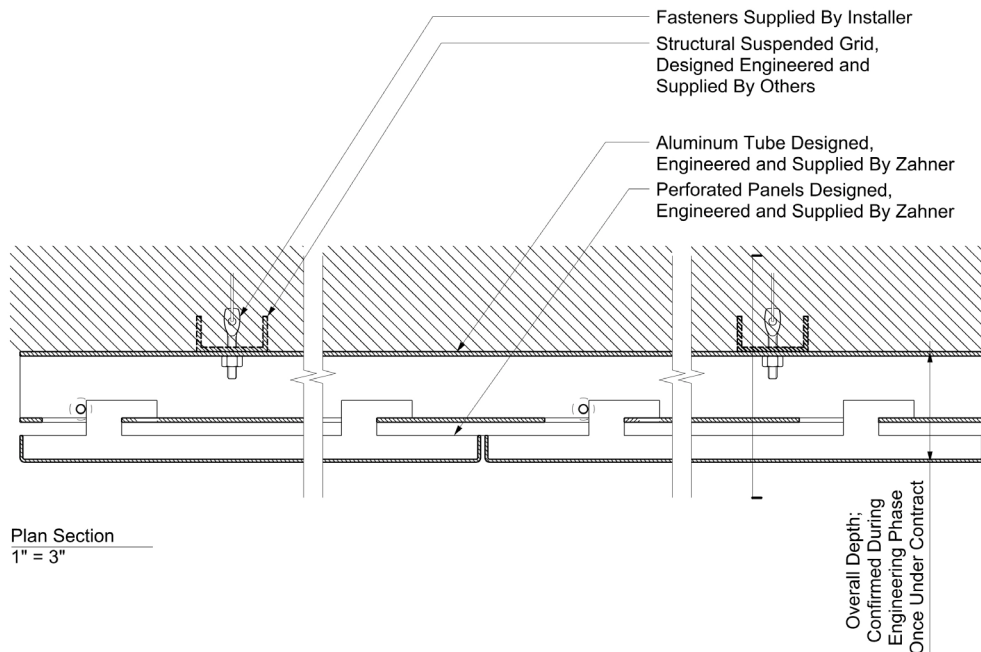


IMAGEWALL: Fastened Along Horizontal or Vertical Panel Edge

SITE	Exterior of existing or new construction
FEATURES	Double Return System: Panels
USES	Façade, Screen/ Fence, Partition and custom panel arrangement

Ceiling

ImageWall's ceiling system creates a drop-ceiling with a grid of panels. Panels **slide and lock** into mullions. Mullions attach to a hanging structural grid provided by installers / others.



IMAGEWALL: CEILING

SITE	Existing or new construction
FEATURES	Seamless surface
USES	Panelized ceiling

Mullion Division Condition

If mullion span exceeds 20', subdivide into smaller mullions.