



**ZAHNER®**

**ROANO ZINC™**

PREWEATHERED ZINC PATINA

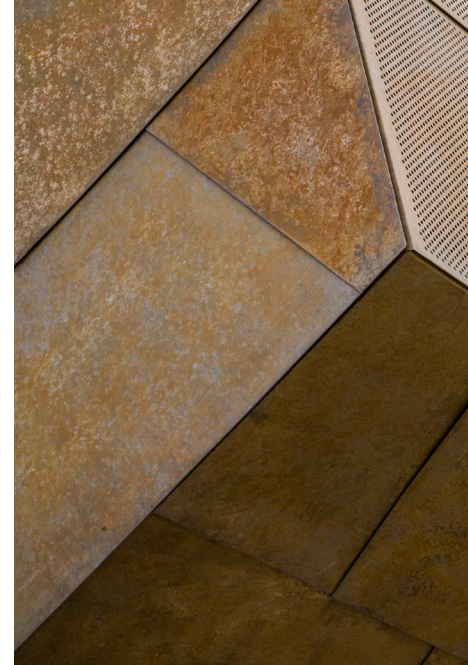
**PICTURED:** TAUBMAN MUSEUM DESIGNED BY RANDALL STOUT ARCHITECTS  
**ROANO ZINC** ON CUSTOM PANELING SYSTEM BY ZAHNER.

# ROANO ZINC™



## Prestige Material Zinc from Zahner

Roano Zinc is a lead-free preweathered zinc with custom patina on zinc-alloy sheet metal. The sophisticated material is part of Zahner's line of raw patinated materials which are designed to age like tanned leather and vintage wine. The result is a look that can function both for contemporary as well as historic aesthetics.

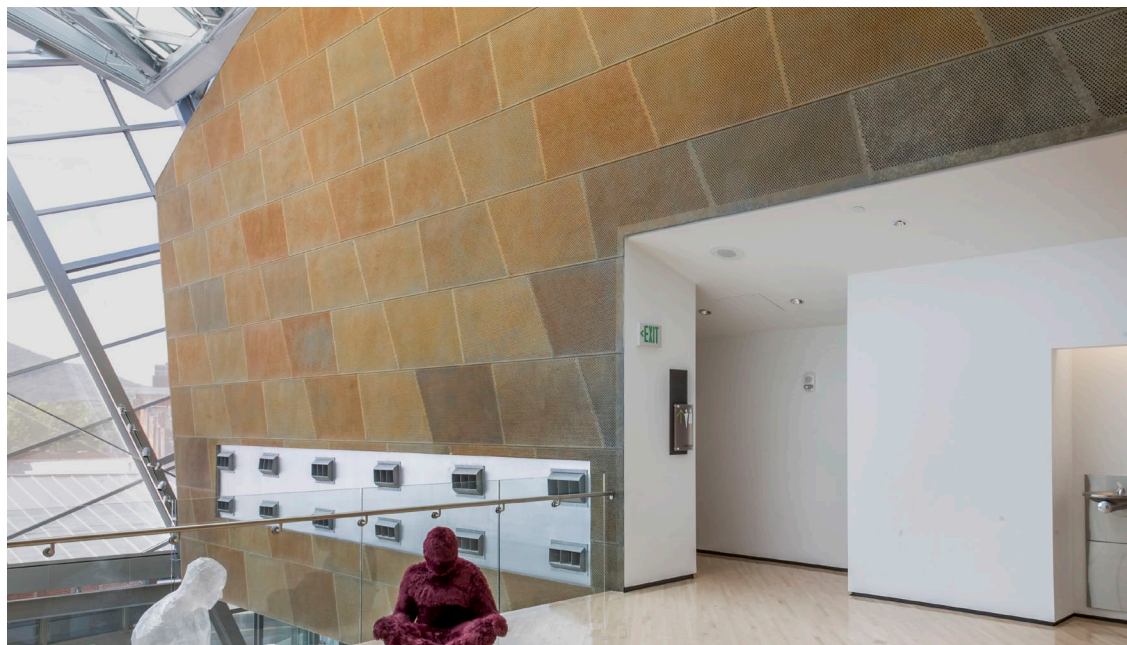
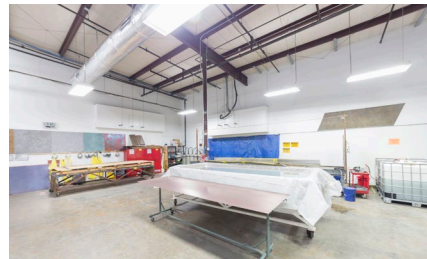


## Durable, Stable Patina on Zinc

The Roano Zinc surface patina is highly stable, and will not rub off, stain or erode. The patina is a mineralized compound, embedded in the surface of the zinc sheet metal itself. The Roano Zinc patina is developed in a controlled environment at the Zahner Dallas Production Facility.

## Meeting EPA Standards for Patinated Zinc

Zahner produces patinas on lead-free zinc, copper and weathering steel in an award-winning, EPA-certified facility in strict compliance with standards for waste management—a process more than ten years in development. As stewards of the built environment, Zahner is dedicated to maintaining minimal impact on habitats surrounding our facilities and projects.



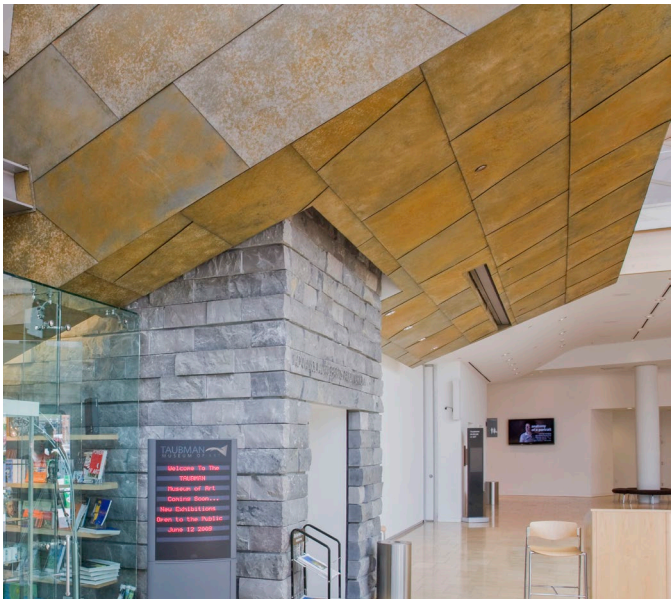
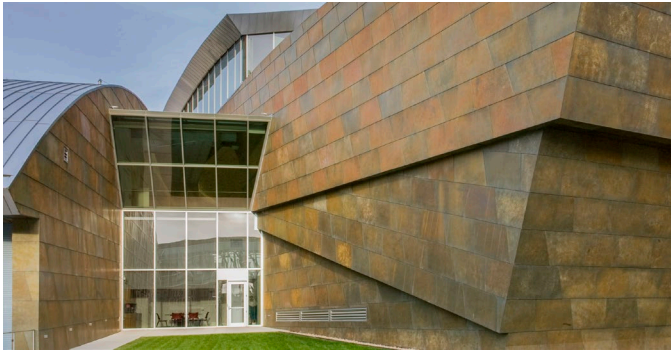


### Patina vs. Paint

Surface patina should not be confused with paint. Patina is a mineralized oxide on metal that is self-limiting (rust, for instance, is not self-limiting because it will continue to eat through a surface). It is a reaction to the elements that in turn provides a protective barrier from the elements.

### Designed to Last

Roano Zinc surface patina provides a protective coating on a material which is already highly rated for its durability. When properly installed, a zinc roof or wall system can last up to 100 years. In Europe, where zinc use is most prevalent, roofs, gutters and railings have been known to last for generations. After their "useful life," these products are then recovered and reused at an impressive rate. In Western Europe, for example, an extraordinary 90 percent of rolled zinc is recovered from roofs and rainwater systems every year, amounting to the equivalent of 110,230 tons (99,999 metric tons).



### Exterior and Interior Applications

Roano Zinc is durable against the exterior environment, and is also durable in the interior and pedestrian environments. The material resists fingerprints and scratches.

**ZAHNER®**

[info@azahner.com](mailto:info@azahner.com)

**A. Zahner Company**

[www.azahner.com](http://www.azahner.com)

**Kansas City Facility**

1400 E. 9th Street

Kansas City, Missouri 64106

United States of America

p +1 (816) 474-8882

f +1 (816) 474-7994

**Dallas-Area Facility**

2860 Alouette Dr.

Grand Prairie, TX 75052

United States of America

p +1 (469) 348-2000

f +1 (469) 348-2003