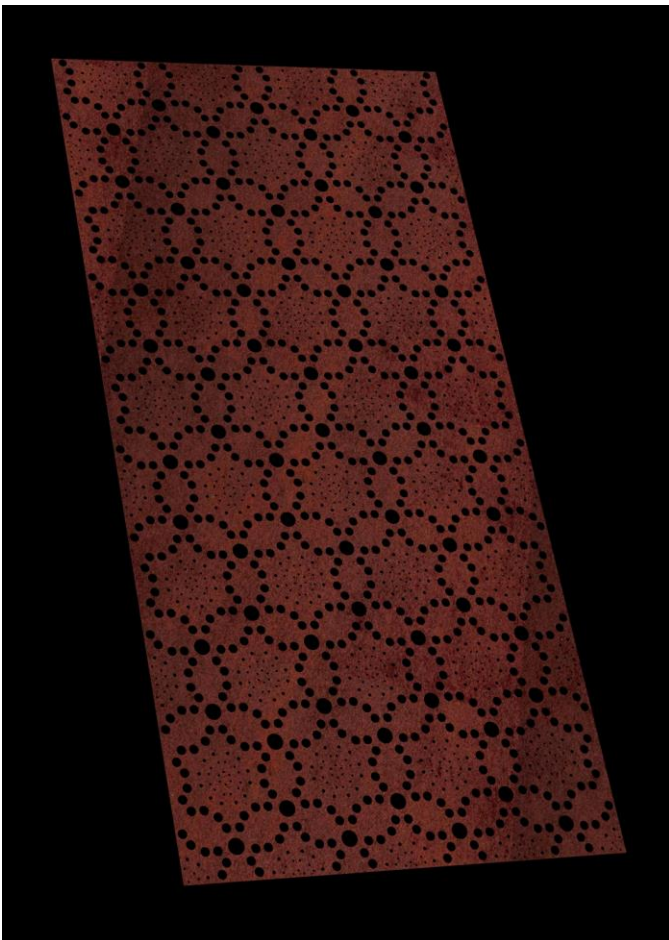
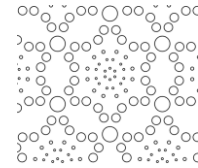


Zahner Patterns offers a simplified approach to add remarkable cut patterns to our most popular metal finishes in a few easy steps. We've combined patterning expertise with metallurgy and patination knowledge, providing solutions to transform your project. Our sheets have enhanced lobbies, decorated parking garages, refreshed exteriors, and created partitioned outdoor spaces.

The sheets may be used in full, or further cut and fabricated by your builder. Additionally, you have the option to collaborate with Zahner if your project requires custom fabrication.



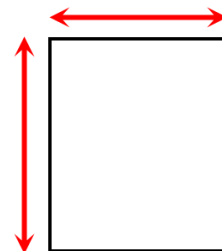
Pattern



Finish

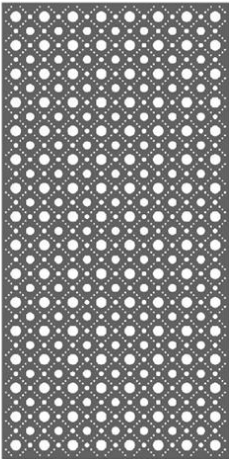


Size

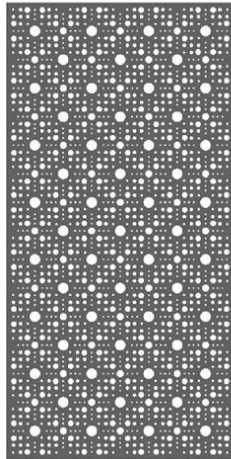


Quantity

10+



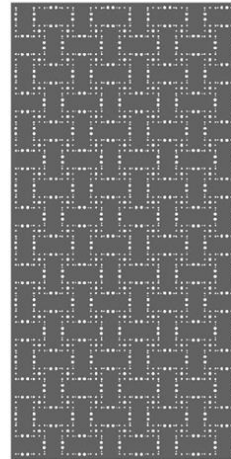
Polka



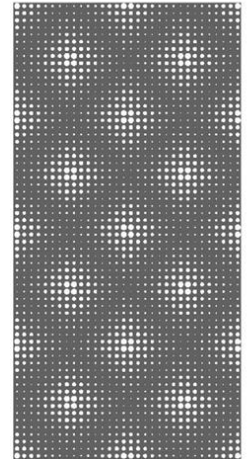
Speckle



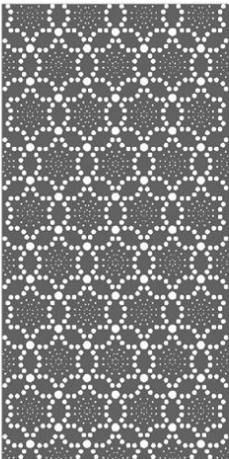
Scallop



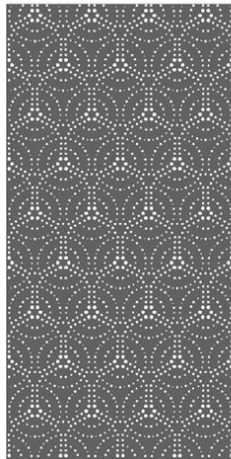
Woven



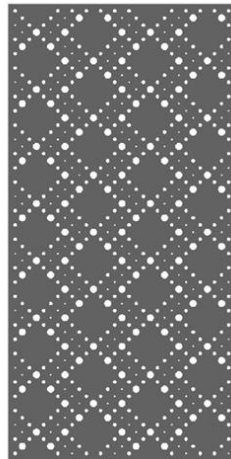
Prism



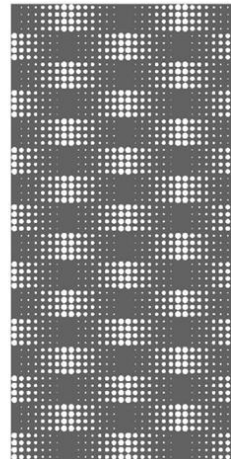
Burst



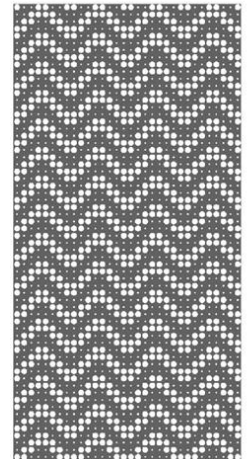
Mandala



Sequin



Lattice



Zest

	% open area (minimum)	% material (maximum)	Pattern Repeat Grid
Polka	21%	79%	6" x 6"
Speckle	19%	81%	12" x 12"
Scallop	26%	74%	12" x 12"
Woven	6%	94%	12" x 12"
Prism	12%	88%	24" x 24"
Burst	18%	82%	12" x 20.78"
Mandala	10%	90%	12" x 20.78"
Sequin	8%	92%	24" x 12"
Lattice	19%	81%	24" x 12"
Zest	29%	71%	12" x 6"

Material, Finish, & Panel Size

Solanum Steel™

Solanum™ is a pre-oxidized weathering steel surface. Our lab accelerates the natural weathering process, advancing the self protecting layer toward the more beautiful mature state that otherwise takes years in the environment. Solanum Steel provides a range of resonant tones on an enduring surface.

Dirty Penny™

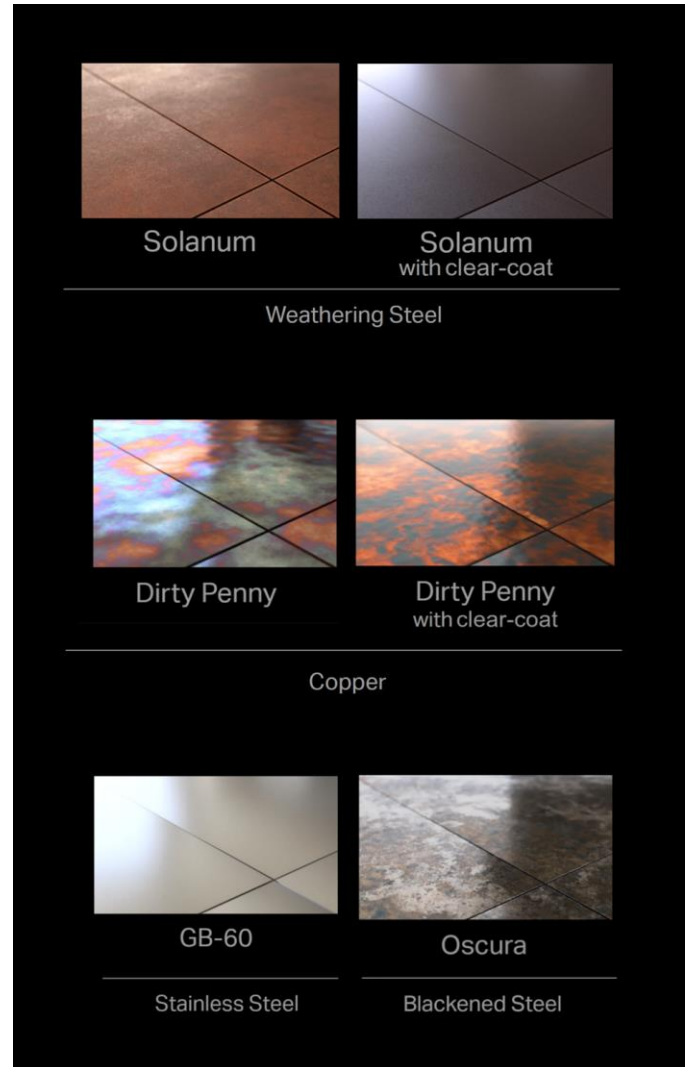
Dirty Penny™ copper is a premium surface with a stunning architectural surface unlike any other. The pre-weathered copper features light and dark tones ranging from blues to greens and reds. An iridescent surface, the material benefits from a microfilm which develops on the exterior layer of the material. The oxidized layer is like a living protecting barrier which grows and evolves as it further oxidizes.

GB-60™

GB-60™ is Zahner's non-directional mechanical finish that diffuses the natural reflectivity of metals by introducing very fine dimples, creating a satin glow. Our operation is further refined through a process of testing various grades to bring the highest level of quality.

Oscura™

Oscura™ is a Zahner blackened patina on steel that has been developed for interior use. Activated steel surfaces create a mottled and artistic ambiance that varies from sheet to sheet. The primary surface is sealed with a clear coat to mitigate rusting due to the effects of the ambient interior environmental.



The items in this chart represent our current material offerings that may be paired with Patterns. The surface finish is on one side only. Typical lead time is 8-10 weeks. For more material options, or for two-sided finish, please contact a Zahner representative.

	Application		Base Metal * (alloy)	Standard Thicknesses *	decimal (mm)	Approx. weight lbs/ft ²	Coefficient of thermal expansion in/in/°F	Standard sheet dimensions *	
	Interior	Exterior						Width	Length
GB-60	•	•	stainless steel (304 or 316)	14 ga 12 ga 11 ga	.0785 (1.99) .1084 (2.75) .1233 (3.13)	3.15 4.41 5.04	9.6 x 10 ⁻⁶	4', 5'	8', 10', 12'
Solanum w/ clear-coat		•	weathering steel (A588 / A606-4)	14 ga 12 ga 11 ga	.0747 (1.90) .1046 (2.66) .1196 (3.04)	3.13 4.38 5.00			
Oscura	•		steel (1008A)	16 ga - 11 ga					
Dirty Penny w/ clear-coat		•	copper	20 oz 24 oz 32 oz 48 oz	.0270 (.686) .0323 (.820) .0431 (1.09) .0646 (1.64)	1.25 1.50 2.00 3.00	9.8 x 10 ⁻⁶	3'	8', 10'